

# AETHER 2"- Round Wall Wash Trimless

## R2ARWL

# WAC LIGHTING

Responsible Lighting®



Fixture Type:

Catalog Number:

Project: \_\_\_\_\_

Location: \_\_\_\_\_

### PRODUCT DESCRIPTION

Shallow housing that is designed to fit in tight plenum spaces without sacrificing lumen output.

### FEATURES

- Designed to fit in tight plenum
- Wet location listed for trims
- 2" trim aperture, 2" housing height
- Universal input voltage (120V-277V)
- 5 year WAC Lighting product warranty

### SPECIFICATIONS

**Construction:** Die-cast aluminum trim with die-cast aluminum heat sink

**Dimming:** 100% - 5% with 0-10V

100% - 5% with Electronic Low Voltage (ELV)/ TRIAC

**Input:** 120V-277V AC

**Power:** 15W, power factor 0.98

**Mounting:** Retention clips firmly hold trim to housing.

**Finish:** Powder coated white, black, enamel coated haze, electroplated brushed nickel

**Standards:** UL & cUL Listed, wet location listed trims, Title 24 JA8-2016 Compliant

**Ceiling thickness:** ½" - 1"

### TRIM (SEE NEXT PAGE FOR HOUSING)

TRIM (SEE NEXT PAGE FOR HOUSING)	Beam	Color Temp	CRI	Lumen	Finish	Interior/Trim
<p><b>R2ARWL</b> Round</p>	<b>A</b> Asymmetrical	<b>827</b> 2700K 85 1070			<b>HZ</b> Haze <b>WT</b> White <b>BK</b> Black <b>BN</b> Brushed Nickel	
		<b>830</b> 3000K 85 1125				
		<b>835</b> 2700K 85 1145				
		<b>840</b> 4000K 85 1160				
		<b>927</b> 2700K 90 890				
		<b>930</b> 3000K 90 925				

**R2A**      **WL**-      -     

Example: R2ARWL-A930-WT

wacighting.com  
Phone (800) 526.2588  
Fax (800) 526.2585

Headquarters/Eastern Distribution Center  
44 Harbor Park Drive  
Port Washington, NY 11050

Central Distribution Center  
1600 Distribution Ct  
Lithia Springs, GA 30122

Western Distribution Center  
1750 Archibald Avenue  
Ontario, CA 91760

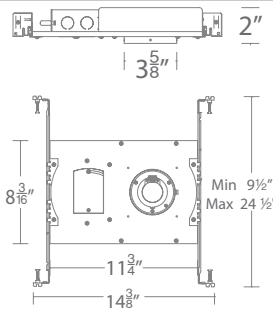
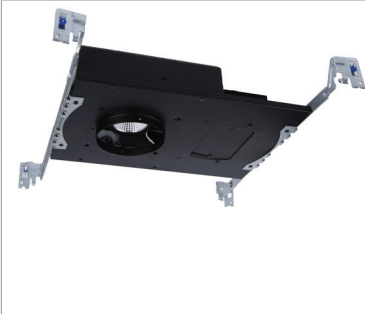
# AETHER - Housing

HR-2LED-H13A

# WAC LIGHTING

Responsible Lighting®

## HOUSING



## Model

**HR-2LED-H13A**

*New Construction  
IC-rated, Airtight*

**HR-2LED-H13AC**

*New Construction  
IC-rated, Airtight  
Chicago Plenum*

## HR-2LED-H13 \_\_\_\_\_

Example: **HR-2LED-H13A**

waclighting.com  
Phone (800) 526.2588  
Fax (800) 526.2585

Headquarters/Eastern Distribution Center  
44 Harbor Park Drive  
Port Washington, NY 11050

Central Distribution Center  
1600 Distribution Ct  
Lithia Springs, GA 30122

Western Distribution Center  
1750 Archibald Avenue  
Ontario, CA 91760