

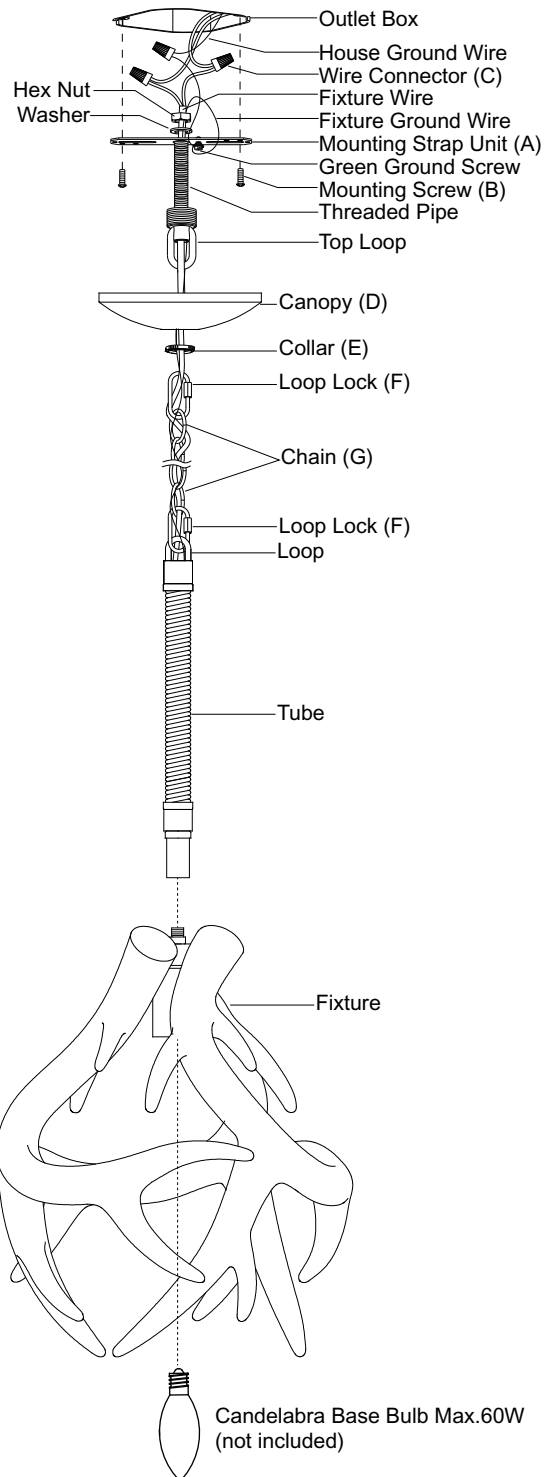
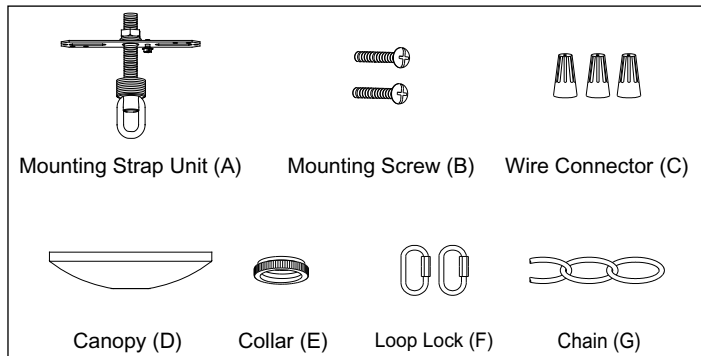
# ASSEMBLY AND INSTALLATION INSTRUCTIONS

P0353

**WARNING:** TO AVOID RISK OF ELECTRICAL SHOCK, BE SURE TO SHUT OFF POWER WHILE INSTALLING OR SERVICING THIS FIXTURE.

**NOTE:** 1. Before installing, consult local electrical codes for wiring and grounding requirements.  
2. READ AND SAVE THESE INSTRUCTIONS.

## Hardware Package(inculded):



## Installation Steps

Turn off the power at fuse or circuit box.

1. Attach the mounting strap unit (A) to the outlet box by using two mounting screws (B).
2. Choose the length of the chain (G) you need, then weave the fixture wire and the fixture ground wire through the chain (G), collar (E), and canopy (D).
3. Screw the tube to the fixture.
4. Connect one end of the chain (G) with the loop by using a loop lock (F).
5. Connect the other end of the chain (G) with the top loop by using another loop lock (F).
6. Thread the fixture wire and fixture ground wire through the top loop, threaded pipe and mounting strap unit (A).
7. Pull out the source wires from the outlet box.  
Make wire connections using wire connectors (C) as follows:
  - Connect the hot wire (black insulation) from the fixture to the black wire from the power source.
  - Connect the neutral wire (white insulation) from the fixture to the white wire from the power source.
  - Attach the fixture ground wire (bare wire) to the mounting strap unit (A) with the green ground screw. Then, depending on local code, connect it to the house ground wire with the wire connector (C).
 Carefully put all of the wires back into the outlet box.

8. Attach the canopy (D) to the mounting strap unit (A) by inserting the top loop, then secure it with the collar (E).
9. Install the bulb (not included). See relamping label at socket area or packaging for maximum wattage allowed.

**Turn on the power at fuse or circuit box.**

The following parts are available for re-order if damaged or missing.

**Spare Parts List:**

			Assembly Kit 6333MM (1 SET)
Mounting Strap Unit (A)	Mounting Screw (B)	Wire Connector (C)	
Canopy (D)	Collar (E)	Loop Lock (F)	
		Chain (G)	

