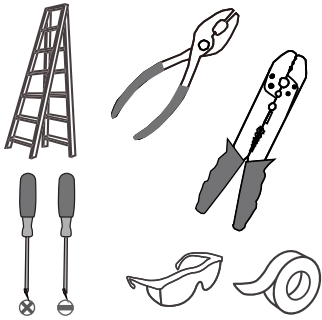
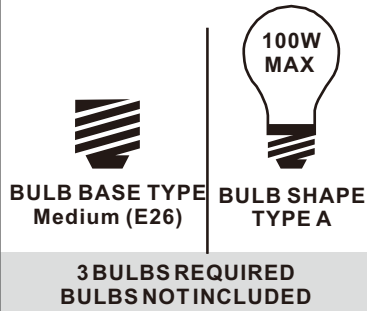


**Tools Required**



**Light Source**



**Warnings and Cautions**

Turn off the electricity at the circuit breaker before installation. Consult a licensed electrician if in doubt about installation.

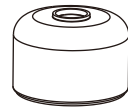
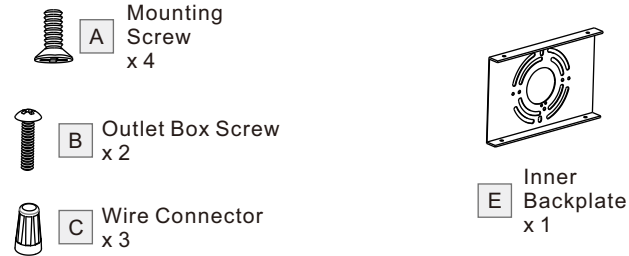
Turn off power to the fixture and allow the bulbs to cool before replacing.

**Package Contents**

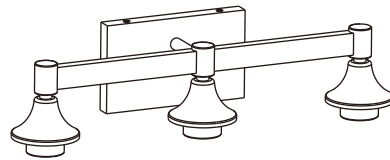
**Preparation:** Identify and inspect all parts before beginning the installation.

Missing or damaged parts? Contact your original place of purchase.

**PARTS BAG**



F Shade x 3

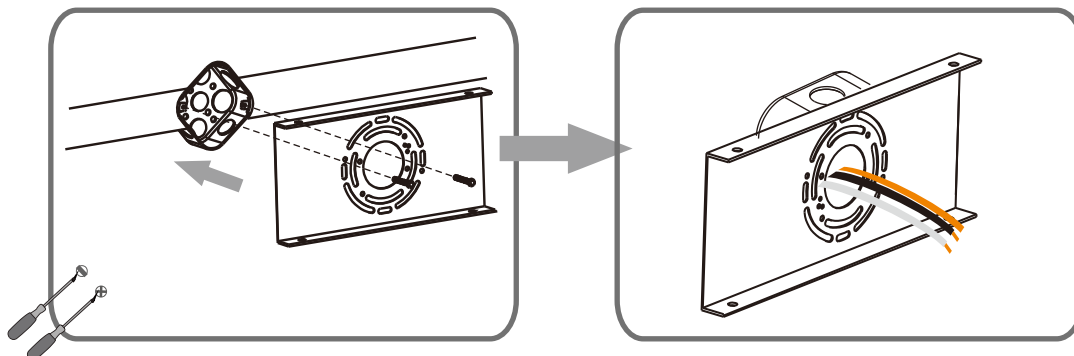


G Fixture Body x 1

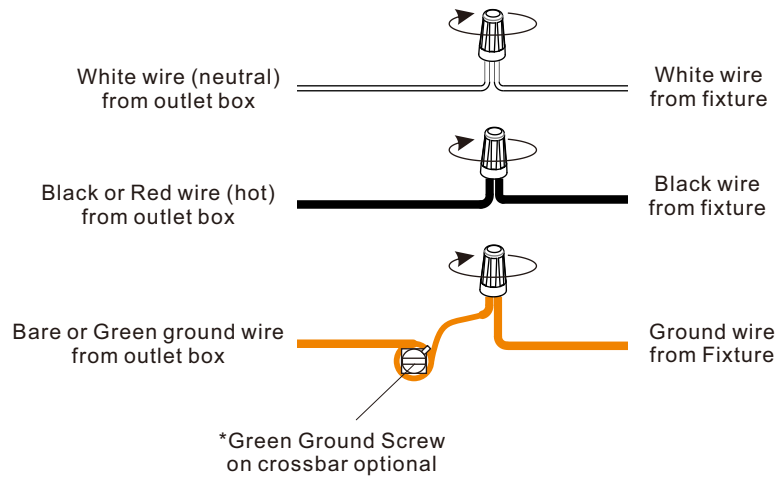
**Table of Contents**

| Inner Backplate | Wiring | Fixture Body | Shade & Bulb |
|-----------------|--------|--------------|--------------|
|                 |        |              |              |
| STEP 1          | STEP 2 | STEP 3       | STEP 4       |

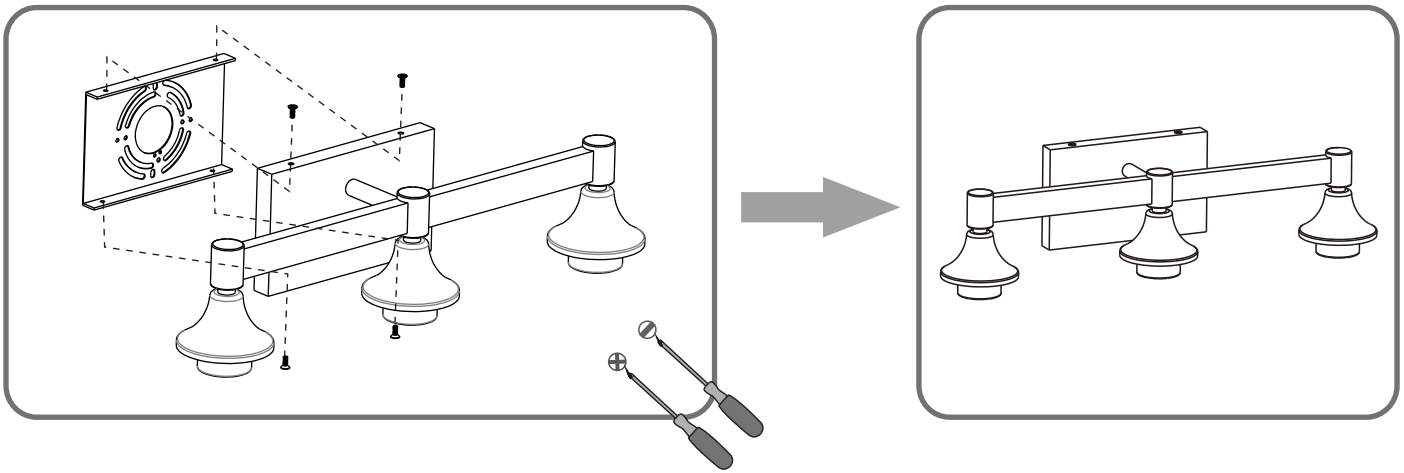
**STEP 1**



## STEP 2



## STEP 3



## STEP 4

