

# TEMPUS Vanity

## 3-5003-xx

# oxygen

FIXTURE TYPE \_\_\_\_\_

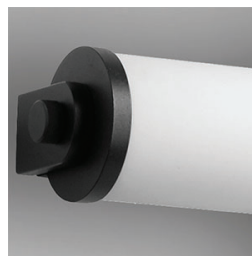
LOCATION \_\_\_\_\_

PROJECT \_\_\_\_\_

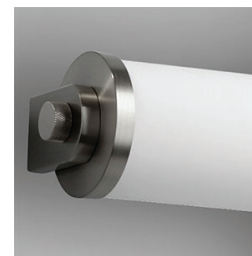
DATE \_\_\_\_\_



-15 Black



-15 Black



-24 Satin Nickel

**LIGHT SOURCE** 2 x 13W LED, 3000K, CRI 90

**LUMINAIRE POWER** 32.9W at 120V

**RATED LIFE** 60000 hr RL

**LUMEN OUTPUT** Delivered: 2376 lm (LM-79)

**INPUT VOLTAGE** 120V, 60Hz

**DRIVER OUTPUT** 700mA, 30W max

**DIMMING** TRIAC Dimming

**CONSTRUCTION** Plated Steel and Acrylic

**DIFFUSER** - Matte White Acrylic

**FINISHES** Black (-15), Polished Nickel (-20), Satin Nickel (-24)

**MOUNTING** 4" Octagonal J-Box\*  
4"x4" Square J-Box\* with single device mud ring  
\*Deep J-Box (Required to house J-Box)

**STANDARDS** ETL Dry/Damp Listed, ADA Compliant, Conforms to UL STD 1598, Certified CAN/CSA, STD C22.2 No 250.0.



### DIMENSIONS

**W: 35.50"**

**H: 5.375"**

**Ext: 4.00"**

**M.C: 2.6875" From Top of Fixture**

Order example for standard fixture:

**3-5003-xx** (x-Voltage - xxx-Sequence # - xx-Finish)

