

TEMPUS Vanity
3-5002-xx

oxygen

FIXTURE TYPE _____

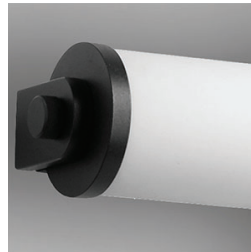
LOCATION _____

PROJECT _____

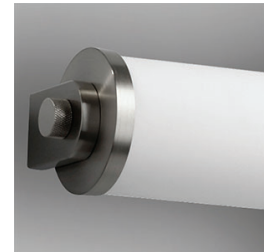
DATE _____



-20 Polished Nickel



-15 Black



-24 Satin Nickel

LIGHT SOURCE 2 x 9W LED, 3000K, CRI 90

LUMINAIRE POWER 23W at 120V

RATED LIFE 60000 hr RL

LUMEN OUTPUT Delivered: 1572 lm (LM-79)

INPUT VOLTAGE 120V, 60Hz

DRIVER OUTPUT 700mA, 30W max

DIMMING TRIAC Dimming

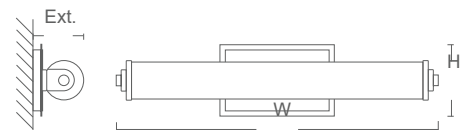
CONSTRUCTION Plated Steel and Acrylic

DIFFUSER - Matte White Acrylic

FINISHES Black (-15), Polished Nickel (-20), Satin Nickel (-24)

MOUNTING 4" Octagonal J-Box*
 4"x4" Square J-Box* with single device mud ring
 *Deep J-Box (Required to house J-Box)

STANDARDS ETL Dry/Damp Listed, ADA Compliant, conforms to UL STD 1598, Certified CAN/CSA, STD C22.2 No 250.0.



DIMENSIONS

W: 24.50"

H: 5.375"

Ext: 4.00"

M.C: 2.6875" From Top of Fixture

Order example for standard fixture:

3-5002-xx (x-Voltage - xxx-Sequence # - xx-Finish)

