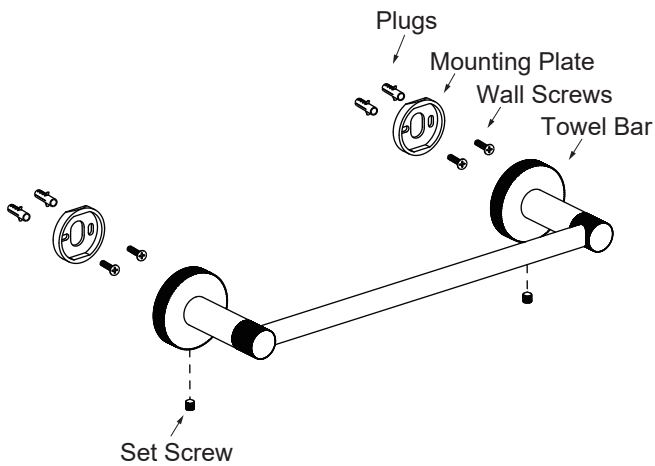


## CIRCO COLLECTION

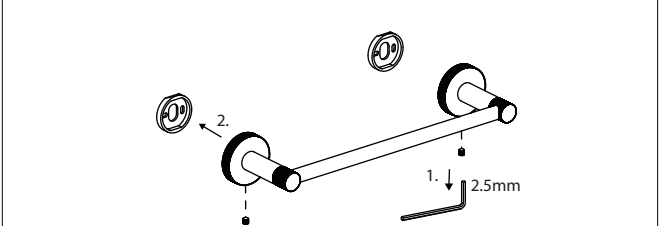
### TOWEL BAR 12"

366120

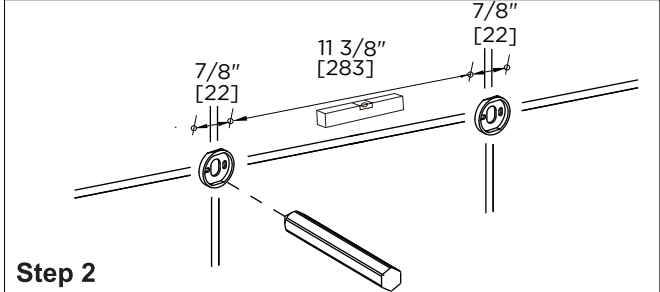


**Tools required for installation**

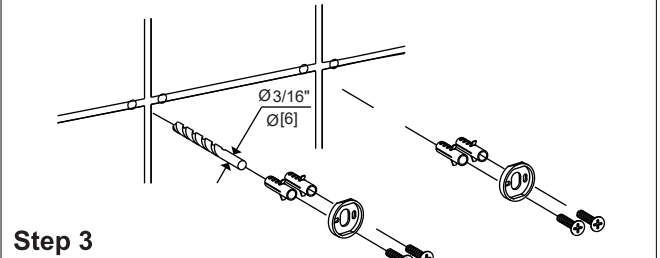
Level	Pencil
Screwdriver	Drill
	Hammer



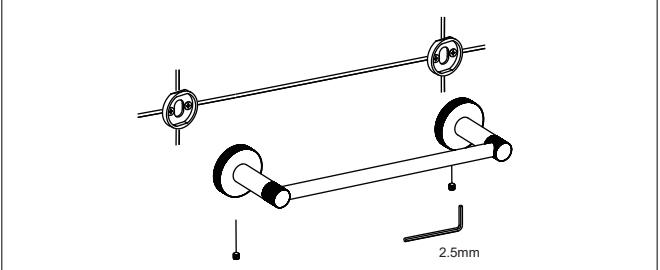
**Step 1**  
Loosen the set screw on the accessory and remove the backing plates. Position the accessory against the wall and mark outline with pencil.



**Step 2**  
Position the backing plates flat side down on the wall and mark holes with pencil.



**Step 3**  
Predrill 3/16" holes on the wall to fit wall plugs. Insert wall plugs into the wall. Position backing plates flat side down over the plugs and install screws.



**Step 4**  
Slide the accessory onto the backing plates and tighten the set screws using Allen key provided.