

Locker Cabinet 54" High

2 Doors

LOCKER1554	1110
LOCKER1854	1163
LOCKER2154	1216
LOCKER2454	1269

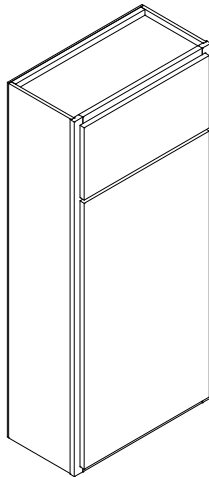
4 Doors

LOCKER2754	1669
LOCKER3054	1726
LOCKER3354	1782
LOCKER3654	1839
LOCKER3954	1896
LOCKER4254	1953

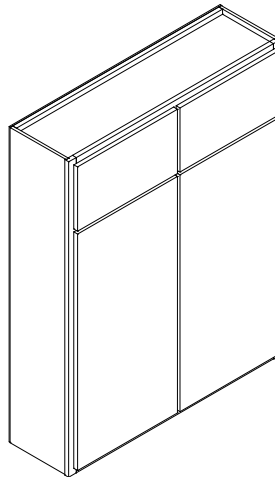
6 Doors

LOCKER4554	2379
LOCKER4854	2439

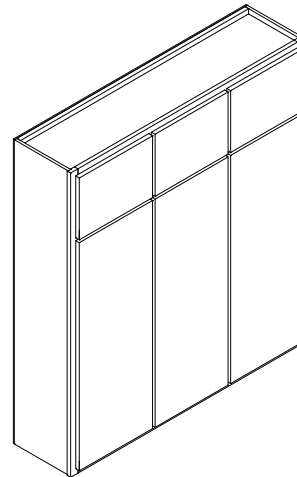
- Standard Height will be 54"
- Standard depth is 12"
Available cut down to 9" deep
- Standard widths from 15" to 48" wide
15" - 24" wide: one door
>24" - 42" wide: two doors
>42 wide: three doors
- Finished interior cabinet all openins standard
Finished ends are at applicable upcharges
- Vertical dividers installed upper and lower sections at all center stiles
- Fixed shelf and rail
Top opening will be 10" tall
All height modifications will be taken from lower section as standard
- Cutdown widths will have equal openings if more than one door
if not equal openings, use CHGDOOR change door arrangement modification



2 Doors



4 Doors



6 Doors

WALL

Locker Cabinet 66" High

2 Doors

LOCKER1566	1170
LOCKER1866	1230
LOCKER2166	1291
LOCKER2466	1352

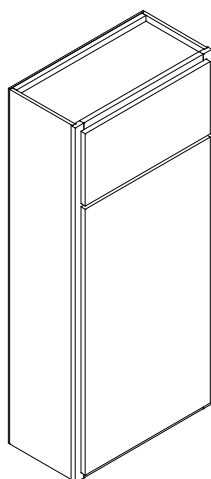
4 Doors

LOCKER2766	1778
LOCKER3066	1842
LOCKER3366	1907
LOCKER3666	1971
LOCKER3966	2036
LOCKER4266	2100

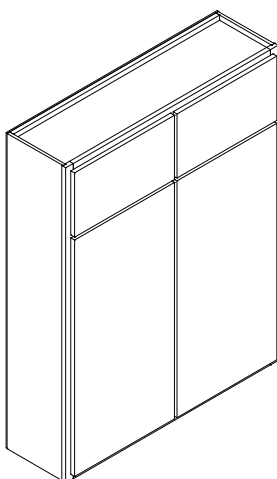
6 Doors

LOCKER4566	2553
LOCKER4866	2621

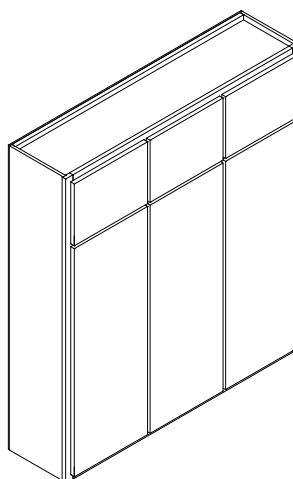
- Standard Height will be 66"
- Standard depth is 12"
Available cut down to 9" deep
- Standard widths from 15" to 48" wide
15" - 24" wide: one door
>24" - 42" wide: two doors
>42 wide: three doors
- Finished interior cabinet all openins standard
Finished ends are at applicable upcharges
- Vertical dividers installed upper and lower sections at all center stiles
- Fixed shelf and rail
Top opening will be 10" tall
All height modifications will be taken from lower section as standard
- Cutdown widths will have equal openings if more than one door
if not equal openings, use CHGDOOR change door arrangement modification



2 Doors



4 Doors



6 Doors

BASE

Boot Bench Cabinets

1 Drawer

BTBNCHDWR15	566
BTBNCHDWR18	601
BTBNCHDWR21	637
BTBNCHDWR24	672

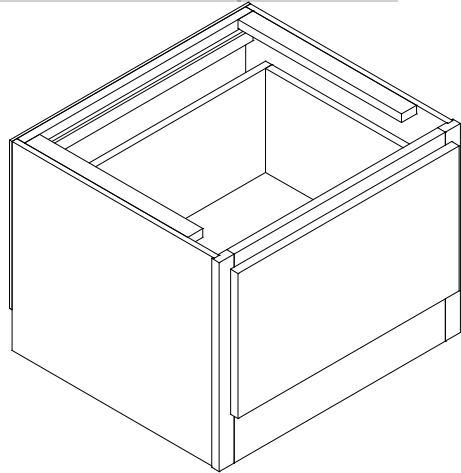
2 Drawer

BTBNCHDWR27	1059
BTBNCHDWR30	1094
BTBNCHDWR33	1130
BTBNCHDWR36	1165
BTBNCHDWR39	1201
BTBNCHDWR42	1236

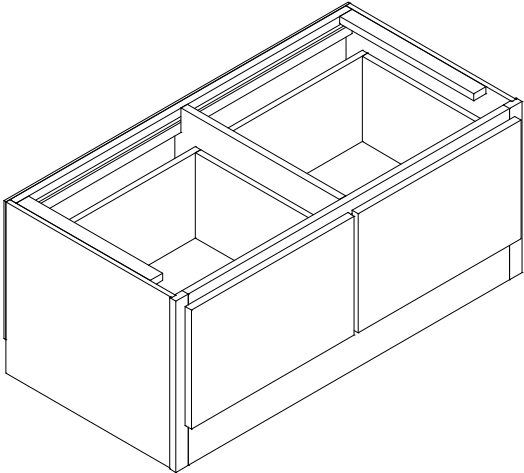
3 Drawer

BTBNCHDWR45	1622
BTBNCHDWR48	1658

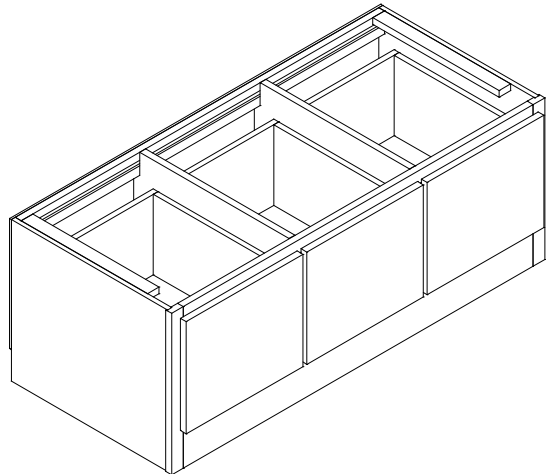
- Standard height is 18"
- Standard depth is 21"
Available cut down to 15" deep
- No top above drawer
- Built with 5" Flush Toe as standard
- Finished ends are priced per side; specify left, right or both
- Standard widths from 15" - 48" wide
 - 15" - 24" wide: one drawer
 - >24" - 42" wide: two drawers
 - >42" - 48" wide: three drawers



1 Drawer



2 Drawer



3 Drawer