



LYNDON[®]

33" WALL-HUNG LAVATORY



D20176001.415 - SINGLE-HOLE

FEATURES

- Fine fire clay construction
- Works with any standard drain (drain not included)
- With overflow
- Wall-hung installation optional
- Includes mounting kit

DIMENSIONS

NOMINAL DIMENSIONS

32-3/4" x 17-11/16" x 8-9/16" (832 x 449 x 217 mm)

BOWL INSIDE DIMENSIONS

19-1/4" (489 mm) wide
12" (306 mm) front to back
5-1/2" (140 mm) depth

COLORS/FINISHES

Canvas White (415)
Polished Chrome (100), Brushed Nickel (144)

COMPONENTS

D35155040.XXX Decorative Grid Assembly (recommended)

COMPLIANCE CERTIFICATIONS

Meets or Exceeds ASME A112.19.2/CSA B45.1



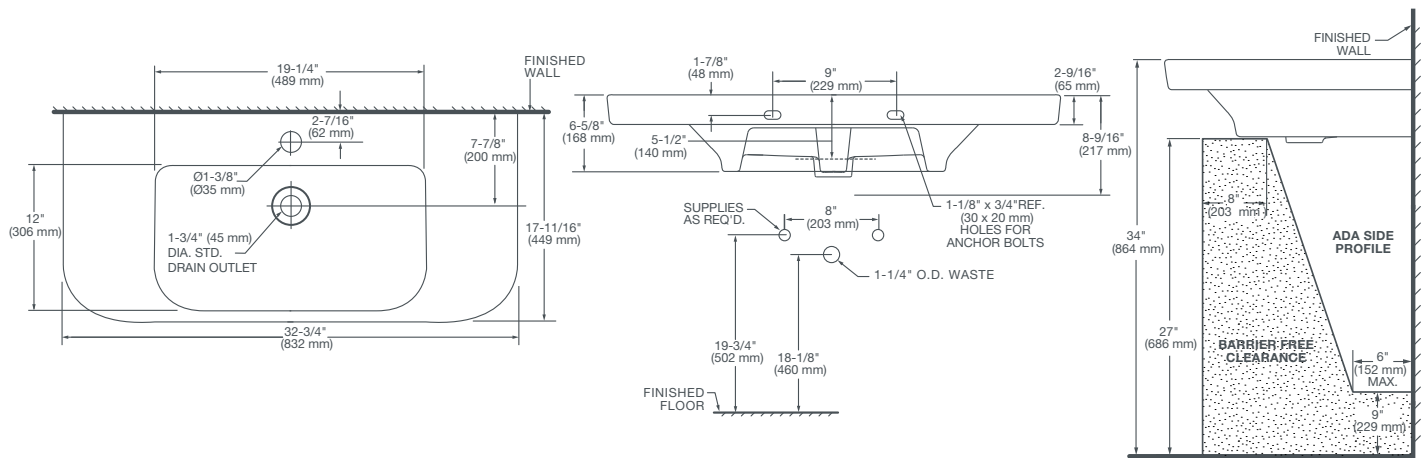
Meets the Americans with Disabilities Act Guidelines
and ANSI A117.1 Requirements for Accessible and
Usable Building Facilities-Check Local Codes.

ROUGH IN DIAGRAM SHOWN
ON NEXT PAGE



LYNDON[®]

33" WALL-HUNG LAVATORY



NOTES:

Dimensions shown for location supplies and "P" trap are suggested. Provide suitable reinforcement for all wall supports. Slab/pedestal anchors and mounting features to be furnished by others. Fittings not included with fixture and must be ordered separately. Installation Instructions supplied with lavatory.

IMPORTANT:

Dimensions of fixtures are nominal and may vary within the range of tolerance established by ANSI standards. These measurements are subject to change or cancellation. No responsibility is assumed for use of superseded or voided pages.

PART OF LIXIL