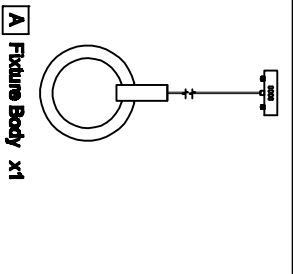


Assembly Instruction Sheet #S-1214P16 For Style 1214P16

Tools Required: Flathead screwdriver, Phillips screwdriver, pliers, wire cutters, wire strippers, electrical tape, safety glasses.
Light Source: (1) 150V LED 1-W DIMMABLE (patent).
Estimated Assembly Time: 18-30 minutes
Preparation: Identify and inspect all parts before beginning installation. Check package content list and diagrams later in the manual to be sure all parts are present. If any parts are missing or damaged, do not attempt to assemble, install, or operate the fixture. Contact customer service for replacement parts.

Warnings and Cautions
 Turn off electricity at circuit breaker or main fuse box before installation. Consult a licensed electrician if in doubt. These instructions are provided for your safety. It is very important you read them completely before installing the fixture. We strongly recommend that a licensed, professional electrician perform the installation. Disconnect fixture from power source before replacing bulbs. Make sure bulbs are given sufficient time to cool before removal.

Package Contents

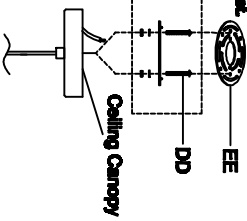


Hardware Contents

PART	DESCRIPTION	QUANTITY
AA	Decorative Caps	2pcs
BB	Mounting Screws	2pcs
CC	Outlet Box	1pc
DD	Mounting Screws	2pcs
EE	Mounting bracket	1pc

STEP 1 - Attach Mounting Screws, Lock Washers and Hex Nuts to Mounting bracket.
 A. Line up a set of holes on the Mounting bracket (EE) and Holes on the Backplate. Thread Mounting Screws (BB) into the holes on the Mounting bracket (EE). Pass Lock Nuts onto the Mounting Screws (BB). Hand tighten until snug.

Figure 1



STEP 2 - Attach Mounting bracket to Outlet Box
 A. Pass the supply wires through the Mounting bracket (EE). Attach the Mounting bracket (EE) to the Outlet Box with the head of the Green Ground Screw facing you. Secure it with Outlet Box Screws. Tighten until snug.

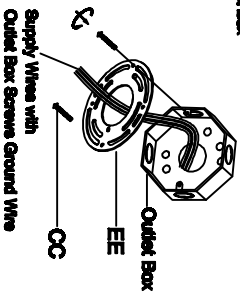


Figure 2

STEP 3 - Fit Backplate to Mounting bracket Assembly
 A. Fit the backplate to Mounting Screws (BB) and secure with Decorative Caps (AA). Note: The backplate should be snug against the coating and the Decorative Caps (AA). If not, adjust the length of the Mounting Screws (BB) by unscrewing the Hex Nut and Lock Washer and then screwing Mounting Screws (BB) in or out of the Mounting bracket (EE) until the correct length is achieved. Once the Coiling Canopy is secure, remove the Decorative Caps (AA) and Coiling Canopy and proceed to step 4

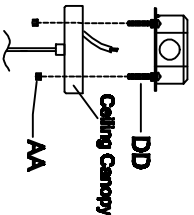


Figure 3

STEP 4 - Wire Connections
 A. Use standard wire connections to make all wire connections. Twist connections until wires are tightly joined together. Wrap each connection with approved electrical tape and carefully strip all the connected wires into the Outlet Box.

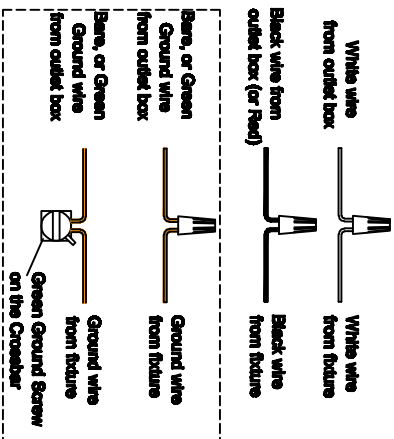


Figure 4

STEP 5 - Install Coiling Canopy to Ceiling
 A. Carefully tuck all wires into the outlet box and position the Coiling Canopy of the Fixture Body (A) over the outlet box. Align the holes in the Coiling Canopy with the Mounting Screws (BB). Secure with Decorative Caps (AA) and hand tighten until snug.

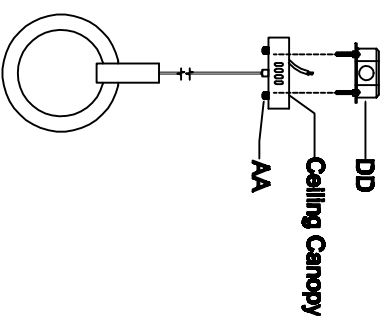


Figure 5