

CRYST RAMA



1958

95 Cantiague Rock Road, Westbury NY 11590

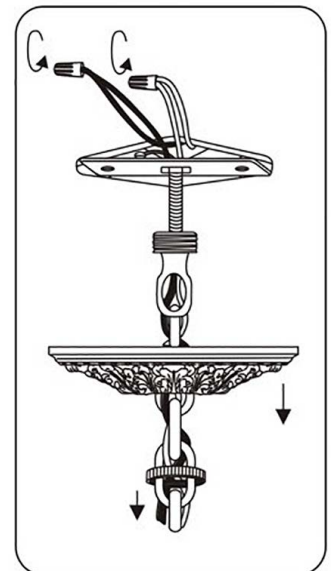
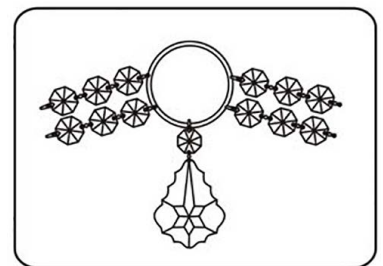
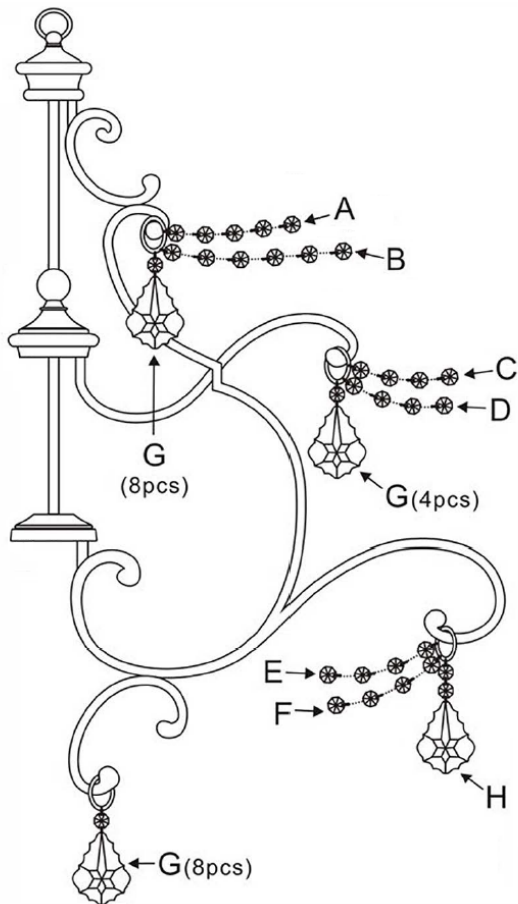
ph:516.931.9090 fax: 516. 931.1254

info@crystorama.com www.crystorama.com

MODEL#:7512-BU-CL-SAQ ASSEMBLY AND DRESSING INSTRUCTIONS



All electrical components must be installed by a licensed electrician in accordance with the National Electric Code and the appropriate local electrical codes.



- A= 6 Jewels Strands * 8pcs
- B= 8 Jewels Strands * 8pcs
- C= 25 Jewels Strands * 4pcs
- D= 29 Jewels Strands * 4pcs
- E= 20 Jewels Strands * 8pcs
- F= 23 Jewels Strands * 8pcs
- G= 20/75-3" + 1 Jewel * 20pcs
- H= 20/75-3" + 2 Jewels * 8pcs

