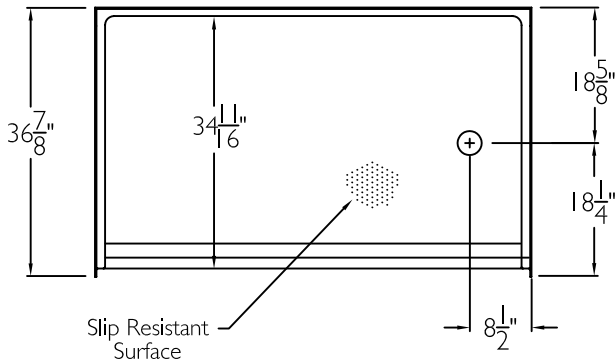
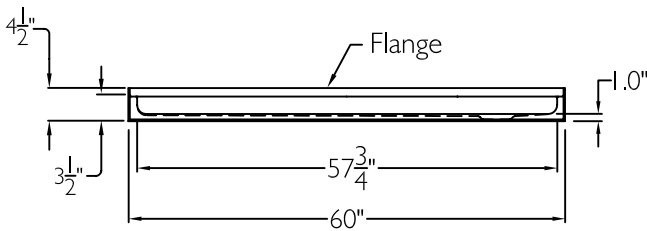


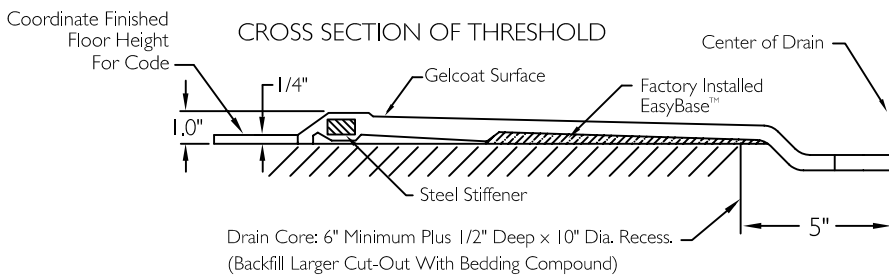
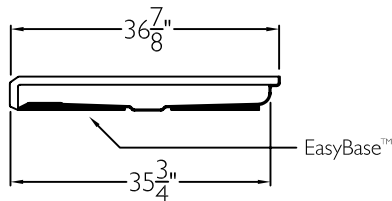
TOP VIEW



FRONT VIEW



SIDE VIEW



SUBMITTAL

This shower enclosure shall be model XSB 6036 BF 1.0 Base left or right drain. Finished surface shall be of a sanitary grade polyester gelcoat exhibiting a minimal thickness of 15 dry mills and a finished cured Barcoal hardness of 80-90 as tested with ASTM D-2583. Unit construction shall be of a molded reinforced fiberglass with a 15% minimum fiberglass content.

The unit shall have outside dimensions of 60" x 36 7/8" x 4 1/2" with a 1.0" threshold.

The unit shall meet ANSI Z124.1-2, BOCA, NAHB, UPC, CSA, shall meet the requirements of the Southern Building Code.

The enclosure shall be equipped with the following features:

- 1) Low entry change of level threshold,
- 2) EasyBase™ self sustaining bottom,
- 3) Slip resistant surface on floor,
- 4) Gelcoat finish,
- 5) 1.0" threshold.

THIS UNIT FEATURES THE OUTSIDE DIMENSIONS OF 60" AND 36 7/8". FINISHED WALLS ABOVE THE SHOWER BASE BY OTHERS.

THIS SHOWER BASE IS AVAILABLE WITH SECTIONAL WALL SYSTEM MODEL: XST 6036 BF 1.0 COL L-R.

Job Name	Approved By	Name	Date	COMFORT DESIGNS	
Comfort Designs 435 Industrial Road Savannah, TN 38372 tel 800.443.7269 fax 731.925.4290 www.comfortdesignsbathware.com	Project No	Architect		Model No. XSB 6036 BF 1.0 COL L-R Base-I	
		Engineer		Drawing No. XSB 6036 BF 1.0 COL L-R EB	
		Rep		Date Issued. 4-23-12	Drawing Rev.
		Wholesaler		Material. Gelcoat	
		Comments			
					Dimensions are in inches. Due to the nature of the materials dimensions may vary ± 1/2"